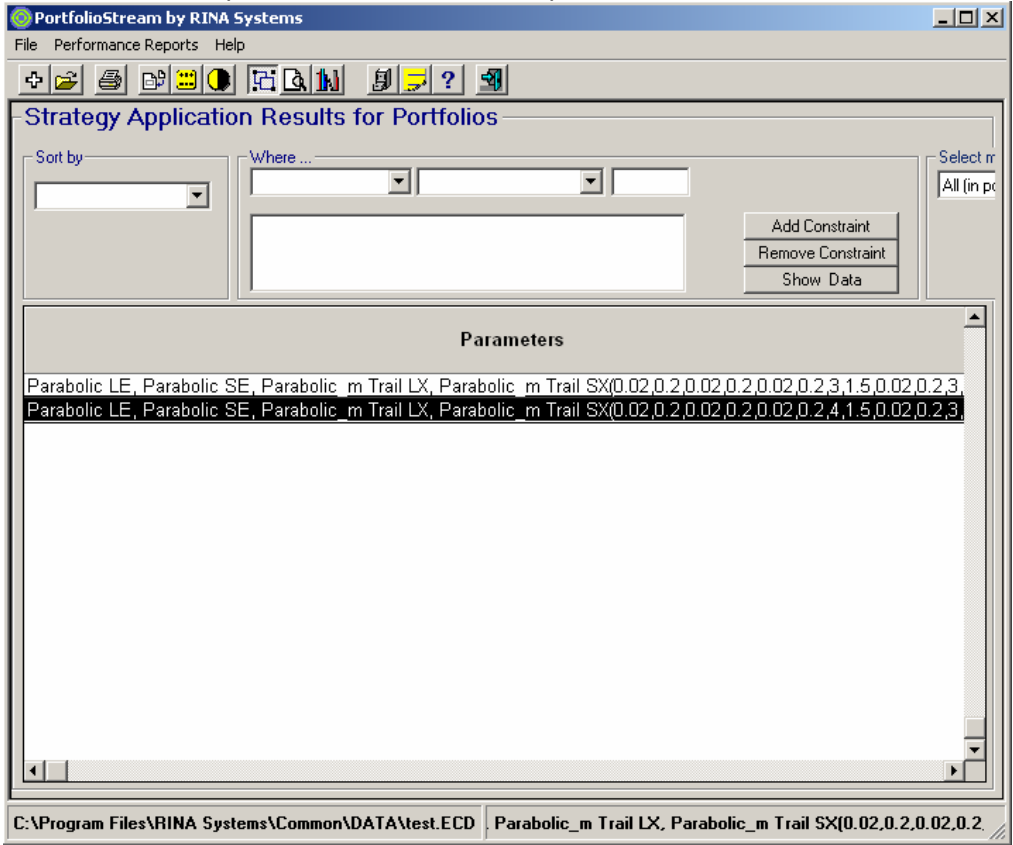


PortfolioStream 6

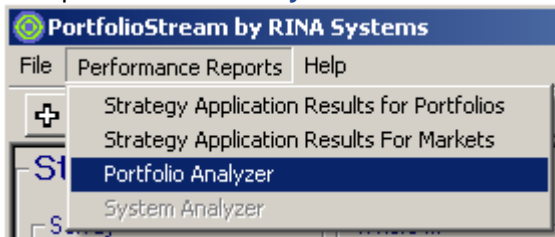
Exporting Chart Data and Saving Charts

Chart data can be exported with the following procedure.

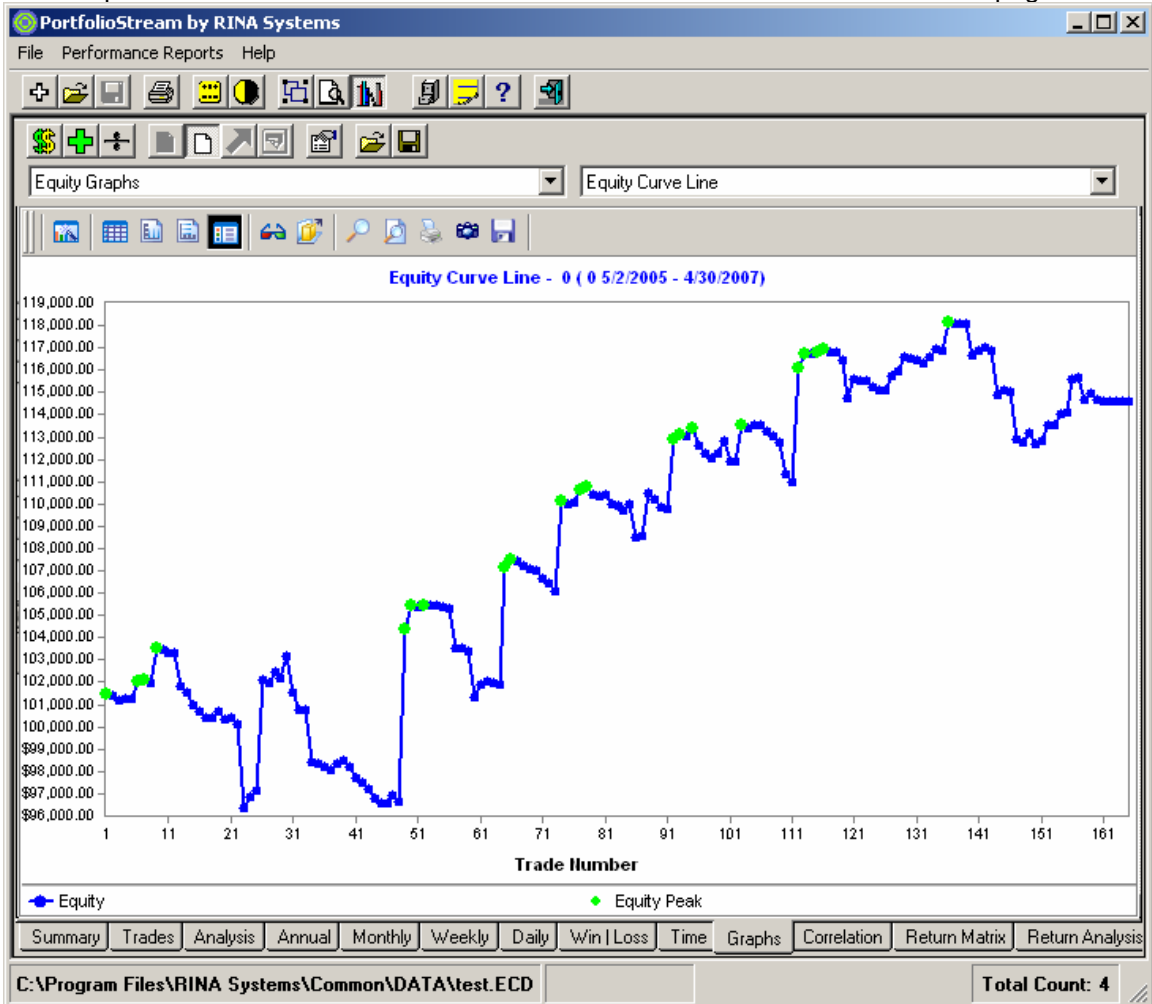
1. Within the portfolio viewer, select one portfolio to view its data.



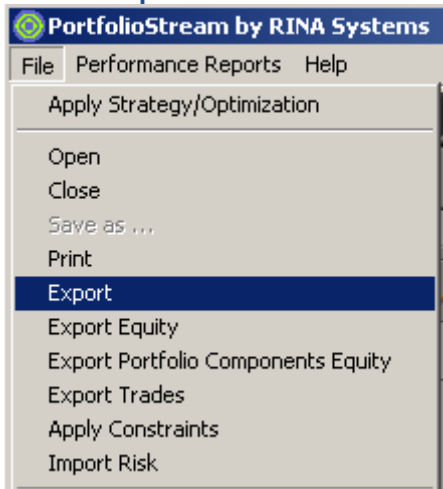
2. Open **Portfolio Analyzer**



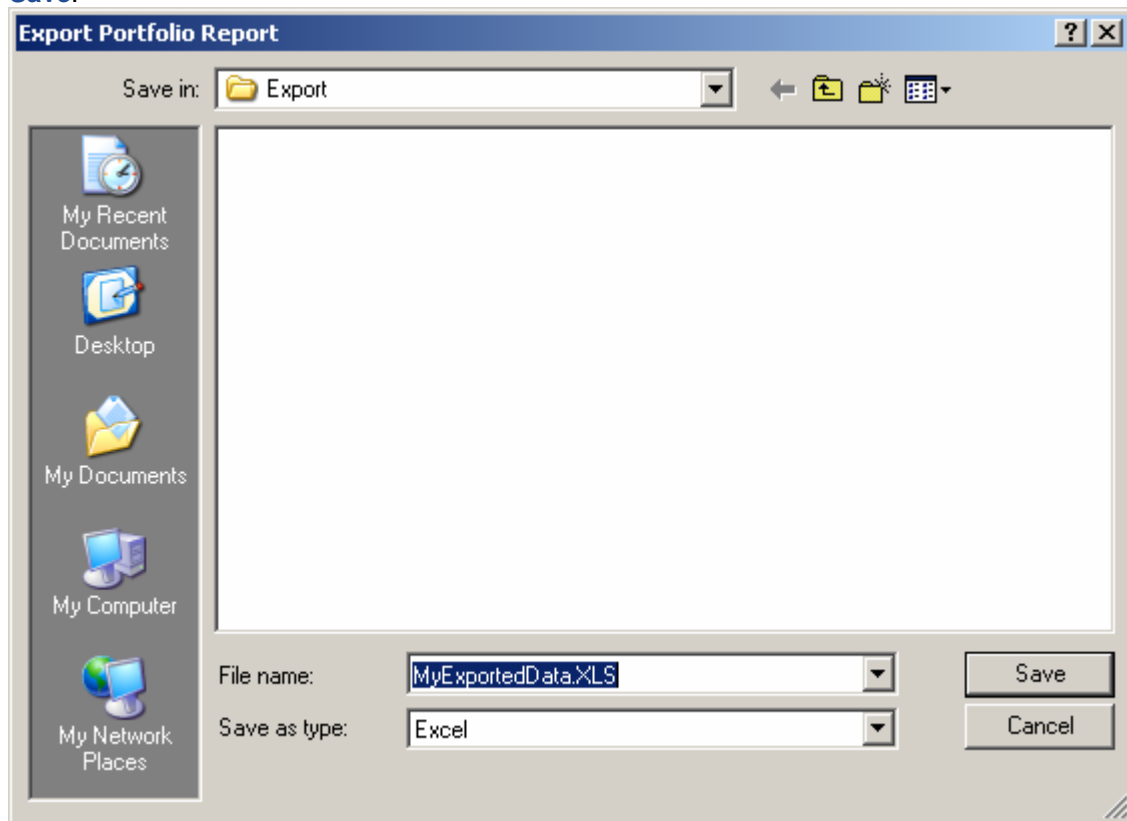
2. The portfolio data is viewable now. Click on the **Charts** tab at the bottom of the page.



Click on **Export** from the File menu



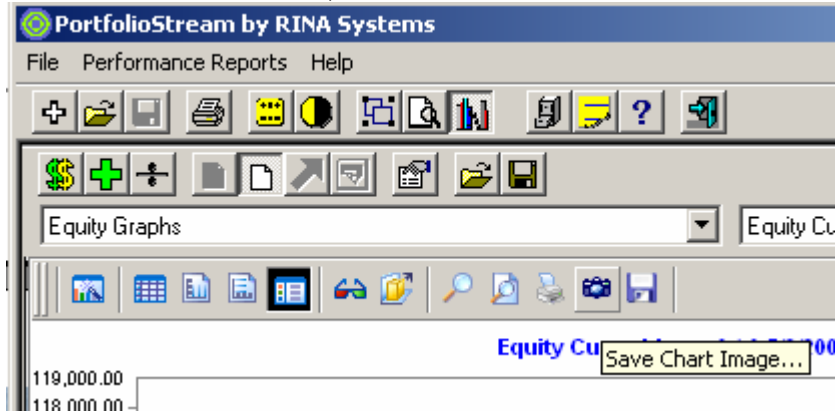
4. Assign a name to the exported data, and note the location where the file is being saved. Click **Save**.



The data can now be viewed in Microsoft Excel.

Saving Charts

1. Within the view of the chart, click on the camera icon to Save Chart Image.



2. Assign a name to the file, and note where the file is being saved in Bitmap format.

